

for all projects:

document size: between 7 and 14 pages
(page sizes/orientation per document)

style sheet assignments:

Character > body text, body text italic, caption, information/callout, subheadings, heading/title

Paragraph > indents, spacing before/after paragraph, tabs

required elements:

index/table of contents

automatic page numbering

readable fonts in information (content) area

use spelling check

be aware of how the document reads both visually and through grammar and content
(grammar, text formatting and punctuation. be aware of widows and orphans)

include some graphic elements (solid or gradient shapes, specialty shapes w/illustration, text on a path, logos, etc)

titles and subheadings appropriate to document with links to index (minimum 4)

minimum of 8 photo images (with appropriate credits)

use at least two nested image/text files and group them

apply color to some of the text (headline/ body text/ callout, etc)

storyboard/design format working toward a consistency of design

image/writing credits or bibliography

use hyperlink or interactive buttons (not those already provided, make new)

text wrap should be used to move text away from the image (unless it is a text overlay)

be sure you select the text wrap that best applies to the shape you're separating the image from.

include your name and email in the document

save the indesign file and the published PDF to the public folder in current classes

(export and save the PDF file with your name as the filename.)

print the document (printer A201)

[← Back to previous page](#)

Mini-Tarts

These pastries are ideal for entertaining. Garnish the mincemeat tarts with whipped cream and the lemon tarts with meringue, fresh seasonal fruit or candied ginger.

Ingredients:

1 1/4 cups all-purpose flour
 1/3 cup confectioners' sugar
 1/2 tsp. salt
 10 Tbs. (1 1/4 sticks) chilled unsalted butter, cut into pieces
 2 egg yolks, lightly beaten with 1 Tbs. water
 1 jar (28 oz.) lemon curd or mincemeat tart filling
 Whipped cream, meringue, fresh fruit or candied ginger for garnish

Directions:

In the bowl of a food processor, combine the flour, sugar and salt and pulse to mix. Add the butter and process in short pulses until pea-size crumbs form, 20 to 25 seconds. While pulsing, add the egg yolk mixture and process to form large, moist crumbs, 10 to 15 seconds more.

Turn the dough out onto a lightly floured surface, shape the dough into a ball and divide it in half. Shape each half into a flat, 5-inch disk, cover with plastic wrap and refrigerate at least 1 hour.

Position a rack in the center of an oven and preheat to 400°F.

Working with one piece of dough at a time, roll out to 1/4-inch thickness. Using a 3-inch round cookie cutter, cut out 12 rounds of pastry. Transfer a round to each well of a 12-well mini-tart plaque or mini-muffin pan. Using your fingers, press the pastry to fit into the well. Bake until the tart shells are evenly golden and crisp, 18 to 22 minutes. Cool the tart shells in the plaque for 5 minutes, then remove from the plaque and cool to room temperature.

Fill each tart shell with 1 1/2 Tbs. tart filling. Garnish with whipped cream, meringue, fresh fruit or candied ginger. Makes 12 tarts.



Related Products:



Cuisinart PowerPrep Plus Food Processor, Chrome
\$399.00

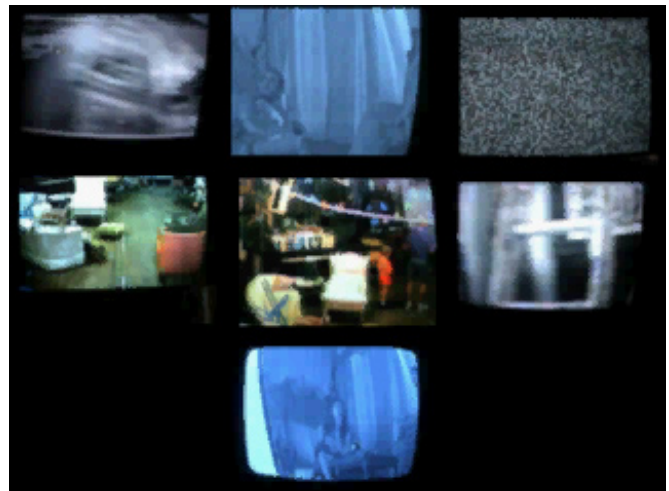


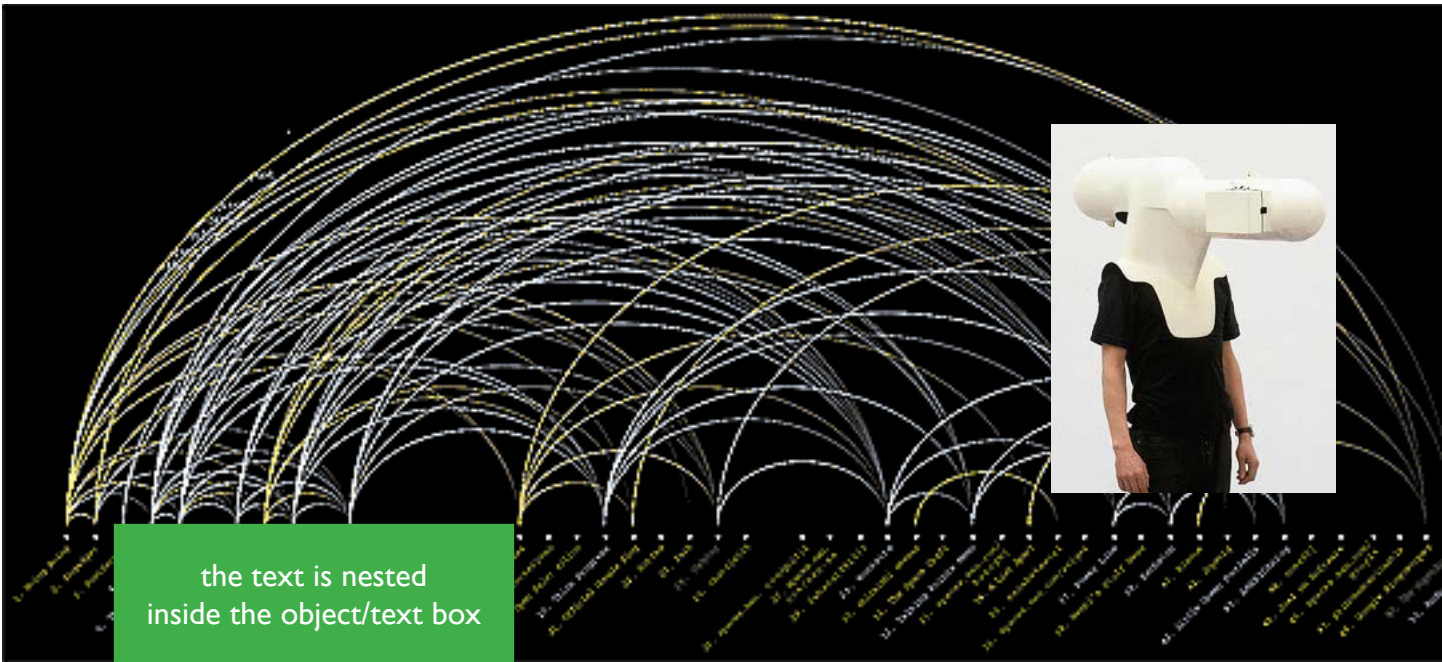
Mini-Tart Plaque
 Regular: ~~\$25.00~~ Sale: **\$18.99**

example: **visual balance**

columns, body text + italicized body, subheadings, headings, captions/information

header, graphic element





the text is nested inside the object/text box

the object at the right is nested and grouped



PMS 2685

C:96 M:100 Y:0 K:10



PMS 208

C:0 M:91 Y:34 K:39



PMS 7491

C:32 M:0 Y:100 K:40



Typefaces: Garamond and Gill Sans

Garamond and Gill Sans are the recommended typefaces for college publications and printed materials.

Garamond (serif— with lines at tips of letters)

Used in the Union College logo, Garamond is the preferred typeface for body text. This classic, versatile typeface is easy to read.

Gill Sans (sans serif—without stroke lines)

This less formal sans serif typeface is recommended for distinguishing headlines, photo captions, etc. from the body text.

Black



PMS 202



weblog: web/magazine document:

format: page sizes 7" x 10"

master pages should contain a graphic (logo or graphic image) with an assigned spot color--one for the left side (even pages) and another for the right (odd pages)

margins: .75 on all sides

layout should include both single and multiple column text format

images selected (either use resources or locate additional images) to reflect the style for web publication.

arrange content to reflect the articles.

select additional text that relates to/reflects the content of the weblog

<http://www.rebeccablood.net/index.html>

make graphic applications that reflect the basis of the information (style sheets for web publications)

storyboard/design layout prior to beginning the layout organization.

tadanori yokoo: exhibition image catalog

format: page sizes (horizontal) 11" x 6.5"

master pages should contain a graphic (logo or graphic image) with an assigned spot color that operates as a design element. include the artist's name as a part of the graphic element

margins: .75 on top and bottom, .5 on each side

most (not all) text in two column layout--include both single and multiple column text format

images selected (either use resources or locate additional images) to reflect the style for web publication.

reference

<http://www.tadanoriyokoo.com/>

(online shop has the image files with titles)

images should have captions, numbers or a caption block to identify each image thoroughly. remember this is an exhibition catalog

select additional information if necessary

this piece should have text/context but is primarily an image catalog

storyboard/design layout prior to beginning the layout organization.

fluxus collection catalog

format: page sizes (vertical) 6"x11

not facing pages/ single page layout and master

master page should contain a header or footer to identify the catalog piece

margins: .5 on each side

some text in two column layout--most in single column. fluxus book--can be inconsistent in terms of text direction/flow. . .reference the movement and artists.

<http://www.fluxus.org/>

<http://www.artnotart.com/fluxus/>

<http://www.paikstudios.com/essay.html>

<http://www.artandculture.com/cgi-bin/WebObjects/ACLive.woa/wa/movement?id=1027>

images should have captions, numbers or a caption block to identify each image thoroughly. remember this is a collection catalog/publication

select additional information if necessary

this piece should have text/context but is primarily an image/collection catalog that may be more than simply text and photographic documents. the work in its own right could be an 'event'

storyboard/design layout prior to beginning the layout organization.

beat poets or edgar allan poe book

format: page sizes square. 7.5"x7.5"

master facing pages, margins at .5 on three sides, .75 on bottom of page

master page should contain a header or footer with title/identity

some text in two column layout--some in three. include stories and or poetry with the information about the writer(s) and the movement

<http://www.rooknet.com/beatpage/writers/kerouac.html>

<http://www.cosmicbaseball.com/>

<http://www.beatmuseum.org/>

<http://www.poemuseum.org/>

images and texts should have identifiers: captions, numbers or caption block to specify each image
this would be a small book, so think in terms of a special edition book

select additional information if you can use it > resources are readily available

this piece should have text/context but is primarily an image/collection catalog that may be more than simply text and photographic documents. the work in its own right could be an 'event'

storyboard/design layout prior to beginning the layout organization.